

2W Xenon Flash Lamp Module - XFM020 Series

This 2W Xenon flash lamp module has a compact body (half-size of 5W module) with high light intensity almost same as the 5W module.

- Stability of light output is max 2.0% CV and good for analytical instruments.
- Guaranteed lifetime is 1 billion flashes.
- Broad radiant spectrum from UV to IR.
- Low calorific value allowing continuous operation with silence, 50dB or less.
- Input voltage is free power supply (4.75V to 26.4V DC),
- With sleep mode, standby current consumption is reduced to about 0.1%.



Specifications

Parameter		Requirement (at ambient temp 23°C±5°C and body temp 50°C or less)
Output	Window material / Spectral range	UV glass / 185 ~ 2000 nm
	Main discharge voltage variable range	400 ~ 600 V / changeable with outside signal 3.2 ~ 4.8 V
	Main discharge capacitor	0.02 / 0.047 / 0.094 / 0.141 μF
	Max average input	2W (continuous) "P[W] = C[F] × (V[Volt]) ² × f[Hz] / 2"
	Guaranteed lifetime / Arc size	1 billion flashes / 1.0 mm
	Stability	Max 2.0% CV "Stability(%)=(Light output standard deviation/aver light output × 100"
Input	Voltage (DC)	Min 4.75 V ~ Max 26.4 V
	Input current (Average value) ^{※1}	at 5 V : 0.7 A, at 12 V : 0.3 A, at 24 V : 0.2 A
	Input current (Peak value) ^{※1}	at 5 V : 1.1 A, at 12 V : 0.8 A, at 24 V : 0.7 A
	Inrush current (Peak value) ^{※1}	at 5 V : 1.8 A, at 12 V : 1.9 A, at 24 V : 2.1 A
	Current consumption at sleep mode	Max 150 μA / Recovery from sleep mode: 30 ms
	Trigger input	3 V~5 V, pulse width 10 μsec or more
	Trigger polarity/Trigger input impedance	Rising edge of trigger signal / 330 Ω
Cooling method	Natural cooling (Cooling is required when the body temp. goes up to 50°C or more)	
Operating ambient temp. / Storage temp	0 ~ 40 °C (Humidity 85 %RH or less) / -40 ~ 90 °C (Humidity 95 %RH or less)	
CE Marking	EMC Standard IEC 61326-1 Class A / RoHS Directive EN IEC 63000:2018	
Resistance to Vibration / Shock	10 ~ 55 Hz, 19.6 m/s ² / 196.1 m/s ² max	

※1 Operating conditions ... Main discharge capacitor : 0.141 μF, Main discharge voltage : 600 V, Emission frequency : 79 Hz

Model number guide

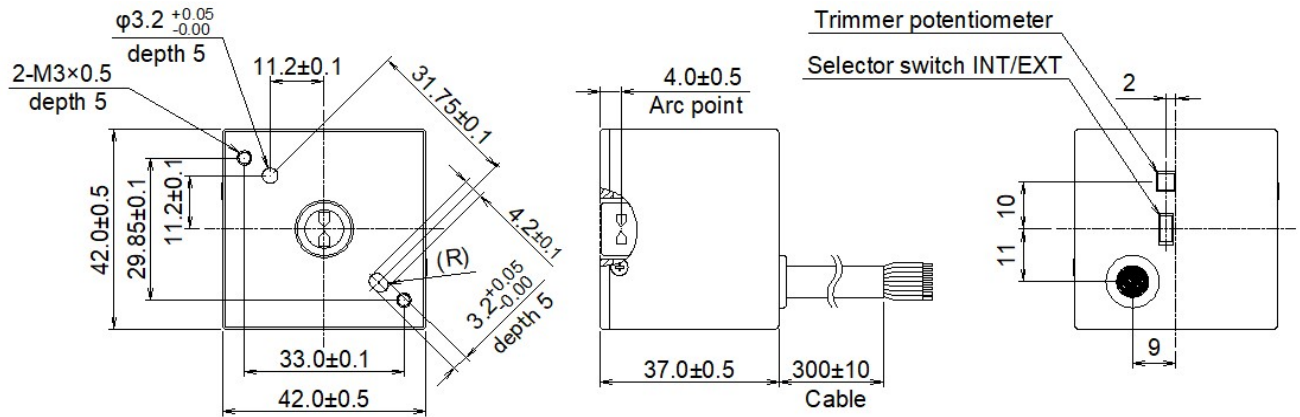
XFM020-0□ (□ should be filled with number of main discharge capacitor)

↳ 0 ... 0.02 μF, 1 ... 0.047 μF, 2 ... 0.094 μF, 3 ... 0.141 μF

Max. repetitive emission frequency (Hz) by model number

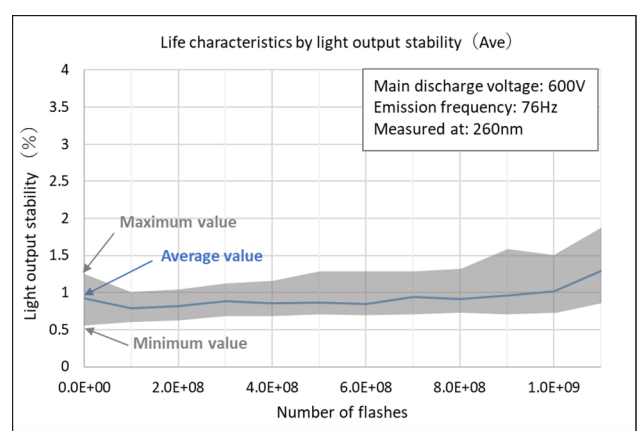
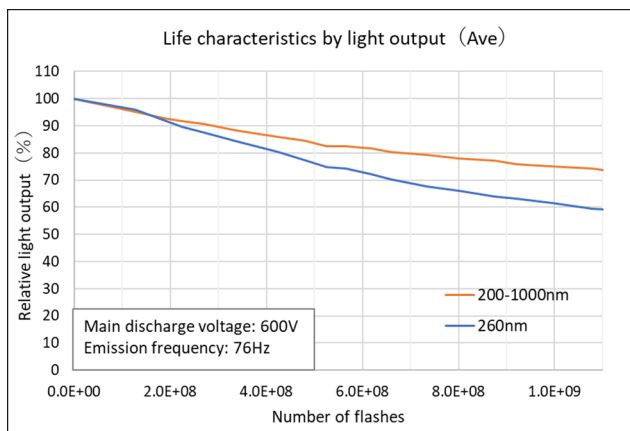
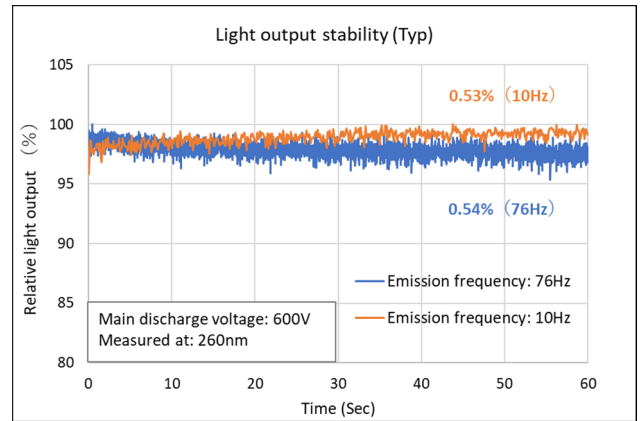
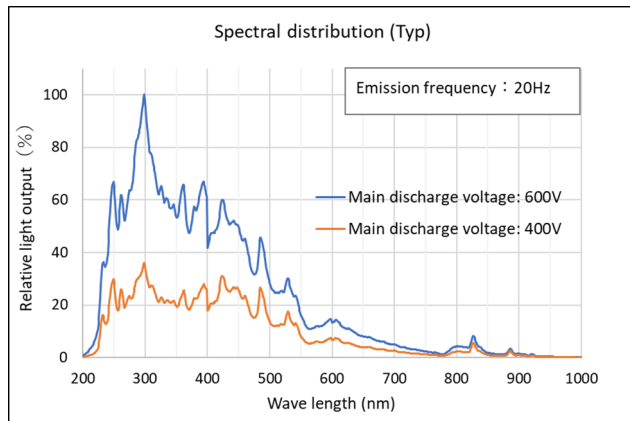
Model No.	Main discharge capacitor (μF)	Main discharge voltage (V)	Max. repetitive emission frequency(Hz)/Max. average lamp input (W)		
			Input 4.75 ~ 5.5 V	Input 10.8 ~ 13.2 V	Input 21.6 ~ 26.4 V
XFM020-00	0.02	400	625 / 1	781 / 1.25	938 / 1.5
		500	500 / 1.25	700 / 1.75	800 / 2
		600	486 / 1.75	555 / 2	555 / 2
XFM020-01	0.047	400	532 / 2	532 / 2	532 / 2
		500	340 / 2	340 / 2	340 / 2
		600	236 / 2	236 / 2	236 / 2
XFM020-02	0.094	400	266 / 2	266 / 2	266 / 2
		500	170 / 2	170 / 2	170 / 2
		600	118 / 2	118 / 2	118 / 2
XFM020-03	0.141	400	177 / 2	177 / 2	177 / 2
		500	113 / 2	113 / 2	113 / 2
		600	79 / 2	79 / 2	79 / 2

External dimensions

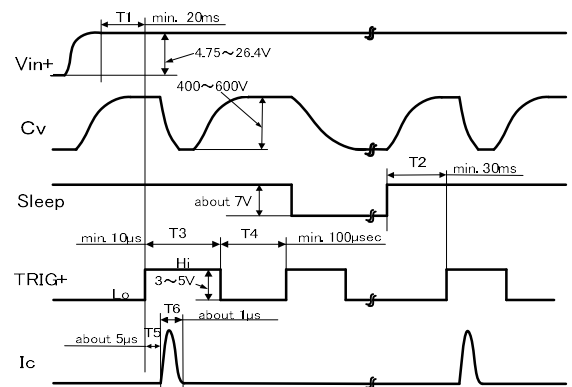
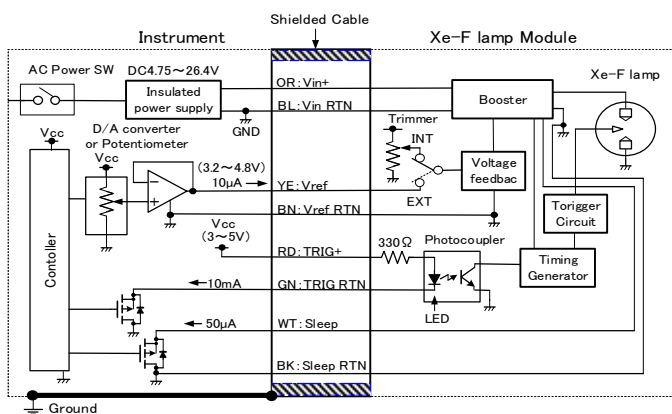


Characteristics

Operating conditions ... Test instrument : Spectrophotometer, Main discharge capacitor : 0.141 μ F, Half width : 5nm



Connection with instrument



Interface between module and instrument

Time chart



Mitorika Co., Ltd. 909-1 Motoishikawa-cho, Mito, Japan 910-0843

URL : <http://www.milas.co.jp> TEL : +81 - 29 - 306 - 7700